

# HOUSE AND LAND Austral

**\$1,087,000**

LAND: \$720,000 HOUSE: \$367,000

**Austral**

LOT 22 AUSTRAL

HOUSE AREA: 186.0m<sup>2</sup>

LAND SIZE: 302.9m<sup>2</sup>

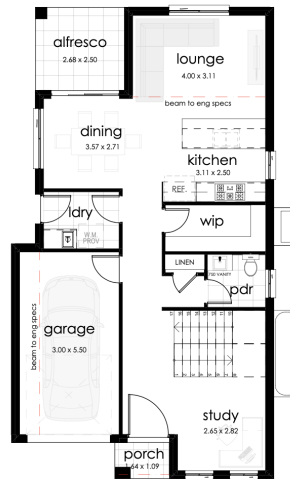


## INCLUSIONS:

- 40mm Quantum Quartz Stone Benchtops From Standard Range
- Freestanding Dishwasher (DW60FC2X1)
- Fridge Provision with Water Connection And Overhead Cupboard
- Clipsal LED Ceiling Down Lights Throughout The House (Up To 50)
- Deluxe Free Standing Bathtub Up To 1700mm Length (Main Bathroom Only)
- Colour Concrete Driveway
- Solid Timber Frame With Full Glass To Pantry

### FLOOR AREA

Alfresco	6.70
First Floor	75.46
Garage	18.74
Ground Floor	75.93
Porch	1.79
Voids	5.50
	<b>184.12 m<sup>2</sup></b>



**Darrel Stenhouse**

✉ darrel@mclarenrealestate.com.au  
☎ 0438789455

**Narellan Office**  
262 Camden Valley Way Narellan

**Harrington Park**  
Shop 9, 23 Fairwater Drive  
Harrington Park Plaza

✉ hello@mclarenrealestate.com.au

☎ 1800 MRE MRE (673 673)

☎ 4648 3777

**www.mclarenrealestate.com.au**

# HOUSE AND LAND Austral



**Darrel Stenhouse**

✉ darrel@mclarenrealestate.com.au

☎ 0438789455

**Narellan Office**  
262 Camden Valley Way Narellan

**Harrington Park**  
Shop 9, 23 Fairwater Drive  
Harrington Park Plaza

✉ hello@mclarenrealestate.com.au

☎ 1800 MRE MRE (673 673)

☎ 4648 3777

[www.mclarenrealestate.com.au](http://www.mclarenrealestate.com.au)